

# EX3600-6

## SALES BROCHURE

# EX3600



### BUCKET CAPACITY:

BACKHOE (SAE HEAPED 1:1): 22 m<sup>3</sup> (28.8 cu. yd.)  
SHOVEL (SAE HEAPED 2:1): 21 - 23 m<sup>3</sup> (27.5 - 30.1 cu. yd.)

### OPERATING WEIGHT:

BACKHOE: 359 000 kg (791,460 lb.)  
SHOVEL: 362 000 kg (798,073 lb.)

### RATED POWER:

1450 kW (1,944 hp)

## ROCK-SOLID PERFORMANCE. NO EXCUSES.

### WORLD-CLASS MINING EXCAVATORS.

It's no coincidence that over one-third of all hydraulic mining excavators working across the world are Hitachi. All of our excavators, like the EX3600-6, are engineered to give you efficiency, reliability and durability for all kinds of jobs. You get strong horsepower, efficient engines, comfortable cabs, advanced hydraulics, tough frames, powerful arm- and bucket-digging forces and more. When you choose the EX3600-6, you get a...

### RELIABLE WORKHORSE.



# SPECIALISTS



# PRODUCTIVITY



Bucket Passes to Dump Trucks											
	Truck	Nominal Payload	Bucket Capacity	Passes to Fill							
				1	2	3	4	5	6	7	8
Shovel	EH3500AC-3	181 tonnes (200 tons)	21-m <sup>3</sup> (27.5 cu. yd.) Bucket								
Backhoe	EH3500AC-3	181 tonnes (200 tons)	22-m <sup>3</sup> (28.8 cu. yd.) Bucket								
Shovel	EH4000AC-3	221 tonnes (243.6 tons)	21-m <sup>3</sup> (27.5 cu. yd.) Bucket								
Backhoe	EH4000AC-3	221 tonnes (243.6 tons)	22-m <sup>3</sup> (28.8 cu. yd.) Bucket								



# MAXIMUM PRODUCTIVITY, RELIABLE PERFORMANCE.

## WORK ANYWHERE, ANYTIME.

The EX3600-6 is built to tackle your tough jobs. A fuel-efficient, Cummins QSKTA60-CE engine provides powerful performance with an Engine-Pump Control (E-P Control) system that efficiently adjusts power to your load demand. The advanced hydraulic system tops the industry for smooth, efficient combined operations of the front attachment and swing, delivering quick cycle times. This system, combined with the Hitachi-patented auto-leveling mechanism and large bucket capacities, contributes to efficient production. The EX3600-6 pairs well with the EH3500-AC3 and EH4000AC-3 trucks and is available in a backhoe or front-shovel configuration. Add the EX3600-6 to your fleet, and you get...

## MAJOR PRODUCTION.

### ■ Powerful Engine.

A Cummins QSKTA60-CE diesel engine meets U.S. EPA Tier 2 emission regulations.

### ■ Efficient E-P Control.

The computer-aided Engine-Pump Control (E-P Control) system senses load demand and adjusts power to the work being performed.

### ■ Large, Efficient Bucket.

The large bucket is shaped specifically to enhance digging and loading operations. Its sharp tilt angle helps boost operating efficiency by allowing the operator better use of the bucket digging forces, and after digging, keeping more of the material in the bucket while loading the haul truck.

### ■ Auto-Level Mechanism.

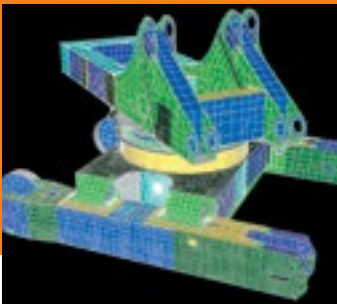
An exclusive Hitachi feature available on front shovel attachments, the one-lever leveling control boosts productivity through efficient operation of the bucket through the dig cycle.

# BUILT TO PERFORM. BUILT TO LAST.

### TOUGHNESS BUILT IN.

The EX3600-6 is designed and built with strength you can count on. Toughness is built-in with the rigid box design and integrated cast steel structures into the center track frame. High-mounted travel motors are guarded against rock damage, and strategically positioned oil coolers are designed to give you more uptime. Add it all up, and the EX3600-6 gives you...

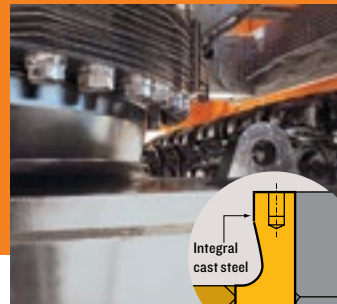
### DURABILITY THAT DOESN'T QUIT.



■ The rigid box design resists bending and twisting forces, giving you stability and strength on any job.



■ High-mounted compact travel motors are protected from rock damage. Optional travel motor guards provide an even higher level of protection from damage.

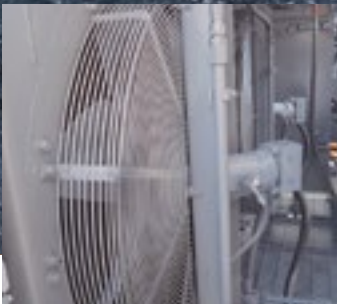


■ The cast steel structures, integrated into the center track frame, assist in avoiding stress concentration and increase reliability.



■ Rugged track links include roller guides to help extend service life.

# DURABILITY



■ Four oil coolers are strategically positioned far from the engine radiator for even better cooling potential.

■ With constant correct track tension, travel is automatically stopped if the nitrogen gas accumulator pressure exceeds a preset level. Alert information and countermeasures are indicated on the multi-display LCD monitor.



# COMFORT

■ The sturdy cab protects operators from falling objects. The cab's top guard meets OPG Level II (ISO) standards. The entire cab sits on a package of fluid-filled elastic mounts that absorb vibration for a more comfortable ride.

■ The 6.83-meter (22.4 ft.) high, forward-sloping cab provides a clear view of the work site – even when loading trucks.

■ The air suspension, multi-position seat can be customized to the operator's needs and adjusted according to operator weight.

■ The well-insulated, pressurized cab keeps out dust and is air conditioned.






# COMFORT BUILT IN. DOWNTIME TOSSED OUT.


## EFFICIENT AND SAFE CAB.

The EX3600-6 cab is designed to keep operators as comfortable, efficient and productive as possible. The well-insulated, pressurized cab keeps dust out while maintaining a comfortable temperature thanks to a highly efficient heating/air conditioning system. Operators of all sizes have plenty of legroom and storage space with the cab's ergonomic design, which helps operators stay productive even on long work shifts. With the EX3600-6, you get...


## EXTENDED PRODUCTIVITY.



■ Electric joystick control levers provide precise and almost effortless operation.



■ The multi-display, color LCD monitor provides machine data, operating status and alerts at a glance. The monitor can be preset to indicate replacement intervals for engine oil, hydraulic oil and filters.



■ Four optional outside cameras can be mounted around the machine for enhanced visibility and help eliminate blind spots.

# MINIMIZED MAINTENANCE. MAXIMIZED PERFORMANCE.

### HIGHER UPTIME.

When it comes to maintenance, the EX3600-6 provides big advantages. The simple servicing, inspection and cleaning of the EX3600-6 reduces costs and allows you to focus on finishing jobs. This excavator features easy-to-check sight gauges and fluid reservoirs, quick-change remote-mounted filters, advanced self-diagnostics and extended filter replacement intervals. When you're operating an EX3600-6, you get...

### LOWER OPERATING COSTS.



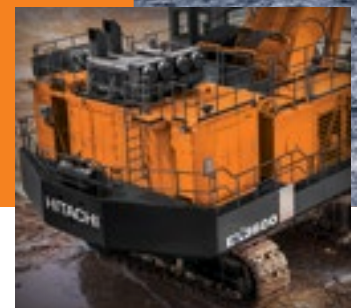
■ Folding stairs with wide steps allow for easy accessibility, servicing and maintenance.



■ The centralized filter system makes inspection and maintenance quicker and more convenient.



■ A contamination sensor alerts the operator before it's too late of accumulated contaminants in the oil that could cause damage.



■ A walkway around the entire counterweight provides easy access to rear areas for faster, safer inspections and maintenance.

# MAINTENANCE



■ Located at the center of the machine, a wide-open service area gives you access to the engine as well as hydraulic and electrical systems.



■ The compartment floor slides down to lower a grease drum can for quick replacement.

■ An ejector automatically expels dust from the air cleaner, giving you one less maintenance task.

■ The auto-lubrication system for the front joint pins and swing circle saves you time.

**EX3600-6**

MINING EXCAVATOR



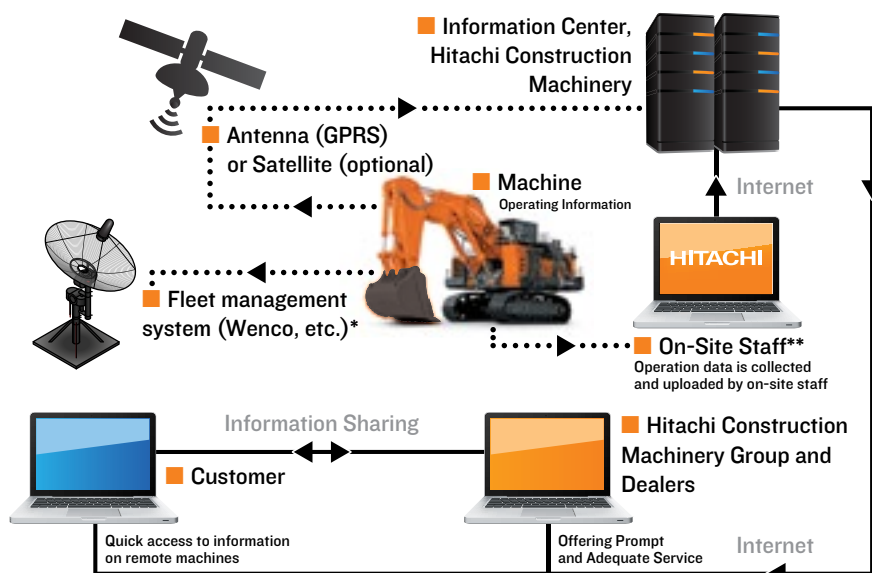
**SUPPORT**

# WHAT YOU NEED, WHEN YOU NEED IT.

## QUICK SUPPORT. NO HASSLE.

At Hitachi, we specialize in excavators and trucks. So you can count on us to respond rapidly when you need support. You'll get the parts you need, the service you want and the customer support you deserve. We stand behind you with a strong dealer network; a skilled factory support team; trained mechanics; and one of the best, most comprehensive warranty and maintenance programs available. We focus on supporting you and...

## YOUR BOTTOM LINE.



■ **Remote Machine Management with Global e-Service.** This online machine management system allows you to access each on-site machine from a PC in your office. You can get its operating information and location to increase productivity. Operating data and log are sent to a Hitachi server for processing, and then to customer and dealers. This system is available 24/7/365.

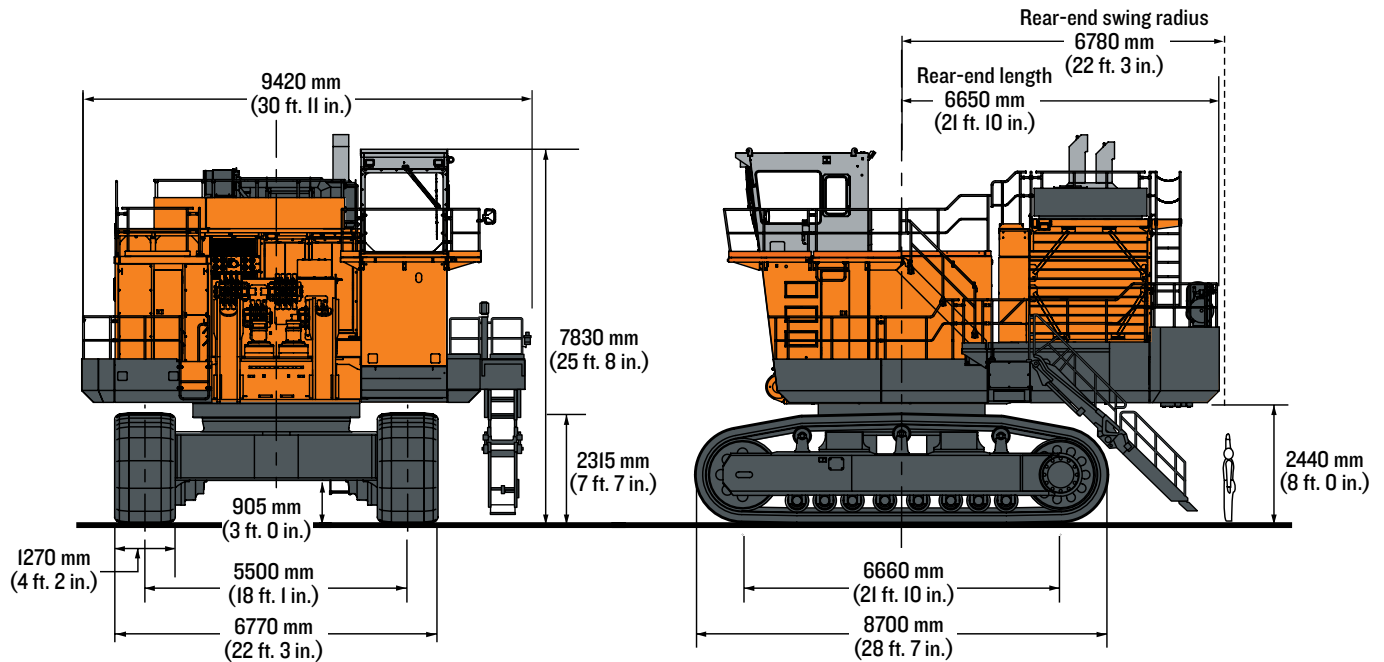
Note: In some regions, the Satellite Communication Device is not available by local regulations; the GPRS (mobile) communication device is an option for these regions.

\* DTU (Data Transfer Unit) (optional) is required for connection to fleet management systems.

\*\*WIU (Wireless Interface Unit) transmits operating data via wireless connection for downloading data.

# EX3600-6 SPECS

## MINING EXCAVATOR



ILLUSTRATIONS SHOW DIESEL ENGINE MACHINE

Diesel Engine		EX3600-6		Electric Motor		EX3600E-6	
Manufacturer and Model	Cummins QSKTA60-CE	Manufacturer and Model	HITACHI TFOA-KK				
Type	4 cycle	Type	High voltage, three-phase, squirrel cage induction motor, totally enclosed air-to-air-cooled (TEAAC).				
Aspiration	Water-cooled, 16-cylinder, turbocharged and aftercooled, direct-injection chamber-type diesel engine	Rating					
Emission certification	U.S. EPA Tier 2	Rated continuous output	1200 kW				
Rated power		Voltage	AC 6000 - 6600 V / 50 Hz				
Gross (SAE J1995)	1450 kW (1,944 hp) @ 1800 min <sup>-1</sup> (rpm)		AC 6600 - 6900 V / 60 Hz				
Net	1450 kW (1,944 hp) @ 1800 min <sup>-1</sup> (rpm)	Number of poles	4				
Maximum torque	8364 Nm (853 kgf-m) @ 1500 min <sup>-1</sup> (rpm)	Synchronous RPM	1 500 min-1 / 50 Hz				
Piston displacement	60 L (3,661 cu. in.)		1 800 min-1 / 60 Hz				
Bore and stroke	159 mm x 190 mm (6.3 in. x 7.5 in.)	Rated current	124 A @ 6600 V				
Starting system	24 V electric motor	Insulation class	F class B raise				
Batteries	4 x 12 V, 4 x 220 AH	Space heater included					
Cold starting	Ether aided	Thermo-guard (temperature detector)					
		Starting condition	Reactor 50% tap				

### Hydraulic System

Hitachi's ETS (Electronic Total control System) can achieve maximum job efficiency by reducing fuel consumption and noise levels, while maximizing productivity through the optimization of engine-pump functions with excellent controllability increasing operator comfort.

### Computer-Aided Engine-Pump Control System (E-P Control)

Main pumps regulated by electric engine speed sensing control system.

### Optimum Hydraulic System (OHS)

Four tandem-axial piston pump groups (eight pumps in total), supply a four-valve hydraulic system enabling both independent and combined operations of all functions.

### Additional Features

Fuel-saving Pump System (FPS) minimizes energy loss with superior performance in fine control

Auto-idle system saves fuel and reduces noise

Hydraulic drive cooling-fan system for oil cooler

Hydraulic drive cooling-fan system for radiator

Forced-lubrication and forced-cooling pump drive system

### Main Pumps

8 variable-displacement, axial piston pumps for front attachment, travel and swing

Maximum oil flow 8 x 500 L/min (8 x 132.1 gal./min.)

### Pilot Pump

Gear pump

Maximum oil flow 110 L/min (29.1 gal./min.)

### Relief Valve Settings

Implement circuit 29.4 MPa (300 kgf/cm<sup>2</sup>) (4,264 psi)

Travel circuit 29.4 MPa (300 kgf/cm<sup>2</sup>) (4,264 psi)

Swing circuit 29.4 MPa (300 kgf/cm<sup>2</sup>) (4,264 psi)

Pilot circuit 3.9 MPa (40 kgf/cm<sup>2</sup>) (566 psi)

### Hydraulic Cylinders

High-strength piston rods and tubes adopted. Cylinder cushion mechanisms are provided for boom, arm, bucket and dump cylinders.

Bucket cylinders of loading shovel are provided with protector.

# EX3600-6

## Cylinder Dimensions (Backhoe)

	Quantity	Bore	Rod Diameter
Boom	2	360 mm (14.2 in.)	260 mm (10.2 in.)
Arm	2	300 mm (11.8 in.)	220 mm (8.7 in.)
Bucket	2	250 mm (9.8 in.)	180 mm (7.1 in.)

## Cylinder Dimensions (Loading Shovel)

	Quantity	Bore	Rod Diameter
Boom	2	360 mm (14.2 in.)	260 mm (10.2 in.)
Arm	1	300 mm (11.8 in.)	220 mm (8.7 in.)
Bucket	2	280 mm (11 in.)	200 mm (7.9 in.)
Dump	2	225 mm (8.9 in.)	130 mm (5.1 in.)
Level	1	360 mm (14.2 in.)	260 mm (10.2 in.)

## Hydraulic Filters

All hydraulic circuits have high-quality hydraulic filters for protection against oil contamination and longer life of hydraulic components. Filters are centralized for convenient maintenance.

	Quantity	
Full-flow filter	5	10 $\mu$ m
High-pressure strainer (in main and swing pump line)	8	120 $\mu$ m
Drain filter (for all plunger-type pumps and motors)	1	10 $\mu$ m
Bypass filter (in oil cooler by-pass line)	1	5 $\mu$ m
Pilot filter	1	10 $\mu$ m

## Controls

### Two Implement Levers

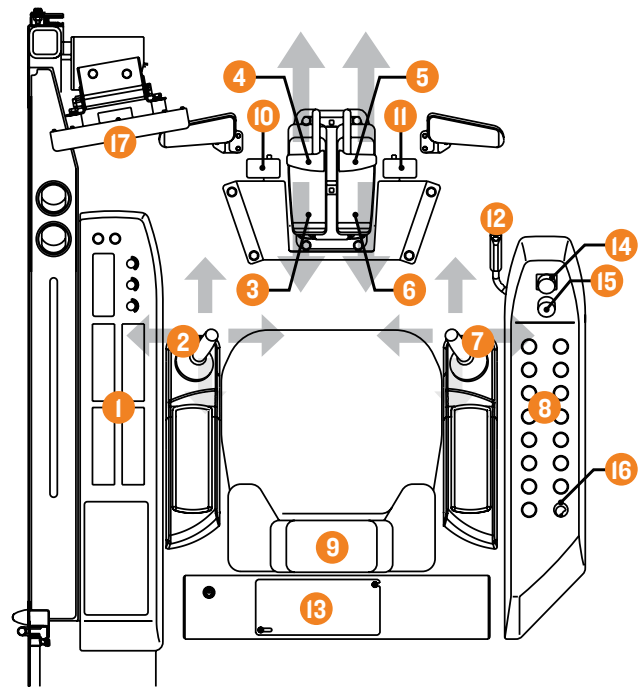
Electric joystick control levers. Right lever is for boom and bucket control, left lever for swing and arm control.

Two pedals provided for opening/closing the bottom dump bucket.

### Two Travel Levers with Pedals

Remote-controlled hydraulic servo system. Independent drive at each track allows counter rotation of tracks.

- 1 Left Console
- 2 Left Control Lever/Horn Switch
- 3 Left Travel Pedal
- 4 Left Travel Lever
- 5 Right Travel Lever
- 6 Right Travel Pedal
- 7 Right Control Lever/Horn Switch
- 8 Right Console
- 9 Operator's Seat
- 10 Bucket Close Pedal (for loading shovel)
- 11 Bucket Open Pedal (for loading shovel)
- 12 Pilot Control Shut-Off Lever
- 13 Rear Console
- 14 Emergency Engine Stop Switch
- 15 Engine Speed Control Dial
- 16 Key Switch
- 17 Monitor Display



DIESEL ENGINE CONTROLS

### Upperstructure EX3600-6

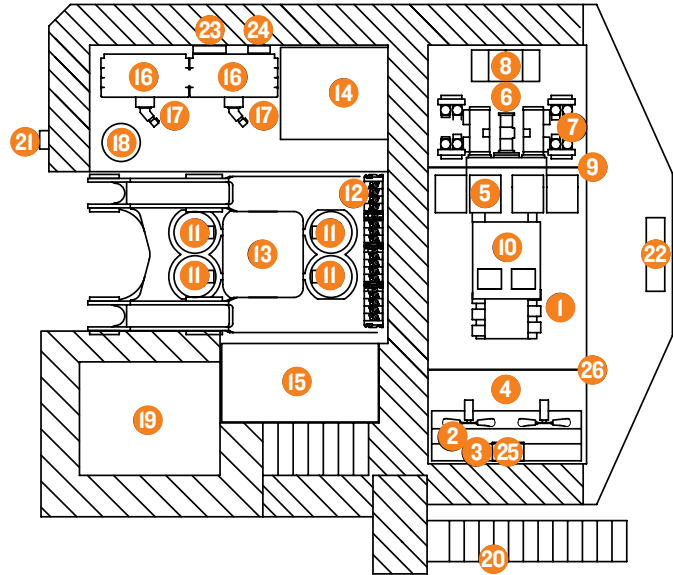
#### Revolving Frame

Deep, full-reinforced box section. Heavy-gauge steel plates used for ruggedness.

#### Deck Machinery

Maintenance accessibility is the major feature in the layout of deck machinery. Sidewalks provide easy access to engine, hydraulic and electrical components.

- 1 Engine
- 2 Engine Radiator
- 3 LTA Radiator
- 4 Fan Motor x 4
- 5 Air Filter x 4
- 6 Hydraulic Pump x 8
- 7 High-Pressure Strainer x 8
- 8 Battery Unit
- 9 Engine-Pump Bulkhead
- 10 Muffler
- 11 Swing Device x 4
- 12 Control Valve x 4
- 13 Center Joint
- 14 Hydraulic Oil Tank
- 15 Fuel Tank
- 16 Hydraulic Oil Cooler x 4
- 17 Hydraulic Oil Cooling Fan Motor x 2
- 18 Lubricator
- 19 Cab
- 20 Folding Stairs
- 21 Ladder
- 22 Reserve Tank (Engine Oil)
- 23 Pump Transmission Oil Cooler
- 24 Fuel Cooler
- 25 Reserve Tank (Coolant)
- 26 Engine-Radiator Bulkhead



DECK MACHINERY  
FOR DIESEL ENGINE MACHINE

### Upperstructure EX3600E-6

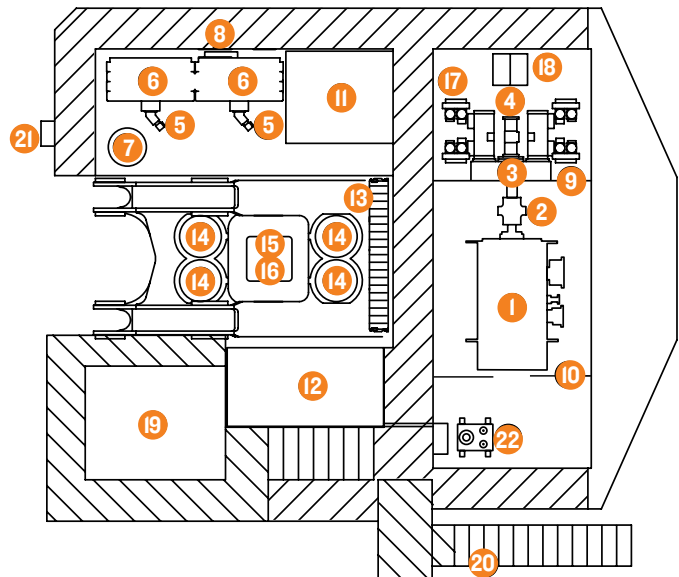
#### Revolving Frame

Deep, full-reinforced box section. Heavy-gauge steel plates used for ruggedness.

#### Deck Machinery

Maintenance accessibility is the major feature in the layout of deck machinery. Sidewalks provide easy access to engine, hydraulic and electrical components.

- 1 Main Motor
- 2 Coupler
- 3 Pump Drive Unit
- 4 Hydraulic Pump x 8
- 5 Hydraulic Oil Cooling Fan Motor X 2
- 6 Hydraulic Oil Cooler x 4
- 7 Lubricator
- 8 Pump Transmission Oil Cooler
- 9 Motor-Pump Bulkhead
- 10 Bulkhead
- 11 Hydraulic Oil Tank
- 12 Cubicle
- 13 Control Valve x 4
- 14 Swing Device x 4
- 15 Slip Ring
- 16 Center Joint
- 17 High-Pressure Strainer x 8
- 18 Battery x 2
- 19 Cab
- 20 Folding Stairs
- 21 Ladder
- 22 Cab Heater Unit



DECK MACHINERY  
FOR ELECTRIC MOTOR MACHINE



# EX3600-6

## Swing Device

4 high-torque, axial-piston motors with two-stage planetary gear bathed in oil. Swing circle with dirt seals is a heavy-duty, triple-row cylindrical roller bearing. Induction-hardened internal swing circle gear and pinion immersed in lubricant. Parking brake of springset/hydraulic-released disc type. This parking brake is manually releasable.

Swing speed 3.2 min<sup>-1</sup> (rpm)

## Operator's Cab

The sturdy cab, with the top guard conforming to OPG Level II (ISO), helps protect the operator from falling objects. 1800-mm (5 ft. 11 in.) width, 2150-mm (7 ft. 1 in.) height, roomy 7.5-m<sup>3</sup> (9.8 cu. yd.) cab with tinted-glass windows features all-around visibility. Air-suspension type, fully adjustable reclining seat with armrests; movable with or without front and swing control levers by slide. Multi-display (267-mm [10.5 in.] LCD) for centralized information of machine status. Color monitor cameras for rear, right side and left lower views. Three separate pressurized air-conditioning systems.

Noise level 76 dB(A) in the cab at maximum engine speed under no-load condition

Eye-level height 6760 mm (22 ft. 2 in.)

## Undercarriage

### Tracks

Shovel-type undercarriage. Dual-flanged-type bolt linkage for side frame and X-form center frame assures durability. Heavy-duty track frame of all-welded, stress-relieved structure.

Top-grade materials used for toughness. Lifetime-lubricated induction-hardened track rollers, idlers and drive tumblers with floating seals. Specially heat-treated connection pins.

Hydraulic track adjuster provided with N<sub>2</sub> gas accumulator and relief valve. Track adjuster provided with protection device against abnormal tension. Travel motion alarm device.

### Shovel-Type Undercarriage

Triple grouser track shoes of induction-hardened cast steel

Shoe width 1270 mm (50 in.)

### Number of Rollers and Shoes (each side)

Upper rollers 3

Lower rollers 8

Track shoes 38

### Travel Device

Each track driven by high-torque, axial piston motors, allowing counter rotation of tracks. Two-stage planetary gear plus spur gears reduction device. Dual-support-type traction device. Parking brake of springset/hydraulic-released disc type. This parking brake is manually releasable.

Travel speeds Low: 0-1.7 km/h (0-1.1 mph)  
High: 0-2.2 km/h (0-1.4 mph)

Maximum traction force 1760 kN/179 500 kgf (395,730 lbf.)

Gradeability 58% (30°) maximum

## Weights and Ground Pressure

### Loading Shovel

Equipped with 21-m<sup>3</sup> (27.5 cu. yd.) (SAE heaped 2:1) bottom-dump bucket.

#### Diesel Engine

Shoe Type	Shoe Width	Operating Weight	Ground Pressure
Triple Grousers	1270 mm (50 in.)	362 000 kg (798,073 lb.)	190 kPa (1.94 kgf/cm <sup>2</sup> ) (27.6 psi)

#### Electric Motor

Shoe Type	Shoe Width	Operating Weight	Ground Pressure
Triple Grousers	1270 mm (50 in.)	353 000 kg (778,232 lb.)	185 kPa (1.89 kgf/cm <sup>2</sup> ) (26.8 psi)

### Backhoe

Equipped with 9.6-m (31 ft. 6 in.) BE boom, 4.5-m (14 ft. 9 in.) BE arm, and 22-m<sup>3</sup> (28.8 cu. yd.) (SAE heaped 1:1) bucket.

#### Diesel Engine

Shoe Type	Shoe Width	Operating Weight	Ground Pressure
Triple Grousers	1270 mm (50 in.)	359 000 kg (791,460 lb.)	188 kPa (1.92 kgf/cm <sup>2</sup> ) (27.3 psi)

#### Electric Motor

Shoe Type	Shoe Width	Operating Weight	Ground Pressure
Triple Grousers	1270 mm (50 in.)	350 000 kg (771,618 lb.)	184 kPa (1.88 kgf/cm <sup>2</sup> ) (26.7 psi)

## Service Refill Capabilities

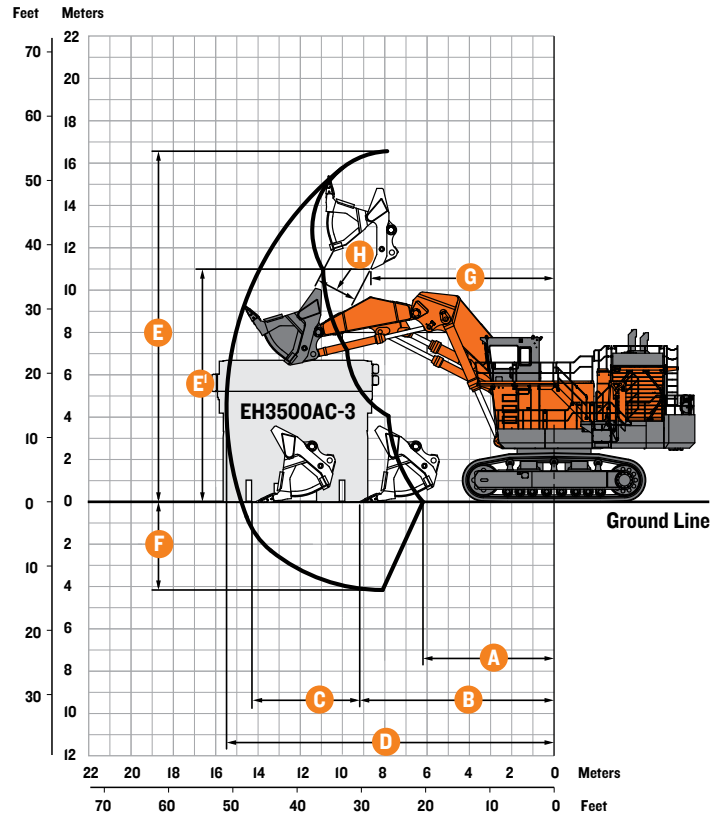
	Diesel Powered	Electric Powered
Fuel tank	7450 L (1,968 gal.)	
Engine coolant	614 L (162 gal.)	
Engine oil pan	261 L (69 gal.)	
Engine oil reserve tank	280 L (74 gal.)	
Pump transmission device	62 L (16 gal.)	62 L (16 gal.)
Swing device	4 X 75 L (4 x 20 gal.)	4 X 75 L (4 x 20 gal.)
Travel device	2 X 220 L (2 x 58 gal.)	2 X 220 L (2 x 58 gal.)
Hydraulic system	4000 L (1,057 gal.)	4000 L (1,057 gal.)
Hydraulic oil tank	1900 L (502 gal.)	1900 L (502 gal.)

# EX3600-6 SPECS

## MINING EXCAVATOR

### Loading Shovel Attachment

### EX3600-6



### Working Ranges

Bucket Capacity (SAE Heaped 2:1)	21-m <sup>3</sup> (27.5 cu. yd.)	23-m <sup>3</sup> (30.1 cu. yd.)
A Min digging distance	6190 mm (20 ft. 4 in.)	6180 mm (20 ft. 3 in.)
B Min level crowding distance	9300 mm (30 ft. 6 in.)	9360 mm (30 ft. 9 in.)
C Level crowding distance	5100 mm (16 ft. 9 in.)	5080 mm (16 ft. 8 in.)
D Max digging reach	15 470 mm (50 ft. 9 in.)	15 550 mm (51 ft.)
E Max cutting height	16 560 mm (54 ft. 4 in.)	16 990 mm (56 ft. 1 in.)
E' Max dumping height	10 990 mm (36 ft. 1 in.)	16 640 mm (54 ft. 7 in.)
F Max digging depth	4160 mm (13 ft. 8 in.)	4250 mm (13 ft. 11 in.)
G Working radius at max dumping height	8650 mm (28 ft. 5 in.)	8650 mm (28 ft. 5 in.)
H Max bucket opening width	1950 mm (6 ft. 5 in.)	1950 mm (6 ft. 5 in.)
Bucket digging force	1166 kN / 119 000 kgf (262,350 lbf.)	1137 kN / 116 000 kgf (255,736 lbf.)
Arm crowding force	1108 kN / 113 000 kgf (249,122 lbf.)	1084 kN / 111 000 kgf (244,713 lbf.)

### Bucket

Boom and arm are of all-welded, low-stress, high-tensile strength steel full-box section design.

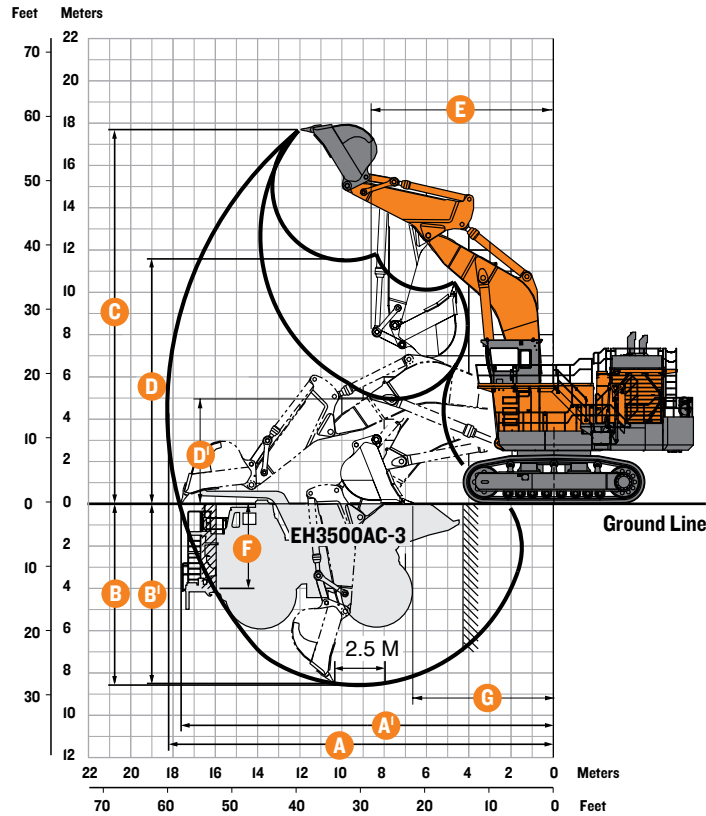
Capacity (SAE heaped 2:1)	Width	Number of Teeth	Weight	Type	Materials density
21-m <sup>3</sup> (27.5 cu. yd.)	4160 mm (13 ft. 8 in.)	5	28 300 kg (62,391 lb.)	Bottom-dump-type general purpose	1800 kg/m <sup>3</sup> (3,034 lb./cu. yd.) or less
23-m <sup>3</sup> (30.1 cu. yd.)	4160 mm (13 ft. 8 in.)	5	28 400 kg (62,611 lb.)	Bottom-dump-type light duty	1600 kg/m <sup>3</sup> (2,697 lb./cu. yd.) or less

Note: These buckets do not include any type of wear protection for sides, bottom, and inside the bucket. Please consult your local Hitachi dealer for a proper wear protection system for your application. Please do not use the buckets without proper wear protection for your application.

# EX3600-6

Backhoe Attachment

EX3600-6



## Working Ranges

<b>BE-boom length</b>		9.6-m (31 ft. 6 in.)
<b>BE-arm length</b>		4.5-m (14 ft. 9 in.)
<b>A</b> Max digging reach		18 240 mm (59 ft. 10 in.)
<b>A'</b> Max digging reach (on ground)		17 660 mm (57 ft. 11 in.)
<b>B</b> Max digging depth		8630 mm (28 ft. 4 in.)
<b>B'</b> Max digging depth (2.5 m level)		8540 mm (28 ft.)
<b>C</b> Max cutting height		17 710 mm (58 ft. 1 in.)
<b>D</b> Max dumping height		11 540 mm (37 ft. 10 in.)
<b>D'</b> Min dumping height		4960 mm (16 ft. 3 in.)
<b>E</b> Min swing radius		8560 mm (28 ft. 1 in.)
<b>F</b> Max vertical wall		4180 mm (13 ft. 9 in.)
<b>G</b> Min level crowding distance		6720 mm (22 ft. 1 in.)
Bucket digging force	SAE	932 kN / 95 000 kgf (209,439 lbf.)
	ISO	1050 kN / 107 000 kgf (235,895 lbf.)
Arm crowding force	SAE	922 kN / 94 000 kgf (207,235 lbf.)
	ISO	951 kN / 97 000 kgf (213,848 lbf.)

## Bucket

Boom and arm are of all-welded, low-stress, full-box section design. Bucket of all-welded, high-strength steel structure. Bucket/arm and arm/boom joint pins are floating type. Replaceable thrust plates are provided with bucket/arm joint part. Auto-lubrication system for all pins is standard.

Capacity (SAE heaped l:l)	Width (without side cutters)	Number of Teeth	Weight	Type	Materials density
22-m <sup>3</sup> (28.8 cu. yd.)	3790 mm (12 ft. 5 in.)	6	18 400 kg (40,565 lb.)	General purpose	1800 kg/m <sup>3</sup> (3,034 lb./cu. yd.) or less

Note: These buckets do not include any type of wear protection for sides, bottom, and inside the bucket. Please consult your local Hitachi dealer for a proper wear protection system for your application. Please do not use the buckets without proper wear protection for your application.

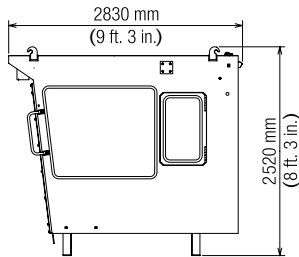
# TRANSPORTATION

### Upperstructure

### EX3600-6

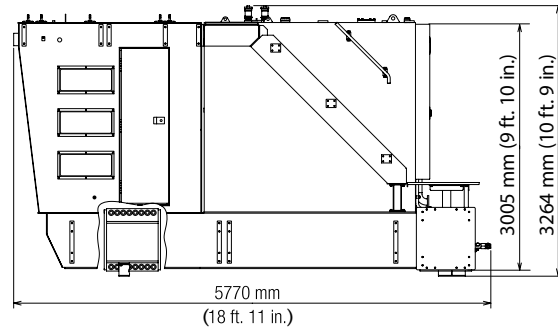
#### CAB ASSEMBLY

Weight: 1750 kg (3,858 lb.)  
Width: 1880 mm (6 ft. 2 in.)



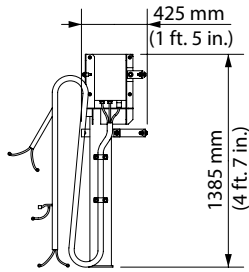
#### BED ASSEMBLY (LEFT)

Weight: 9270 kg (20,437 lb.)  
Width: 2370 mm (7 ft. 9 in.)



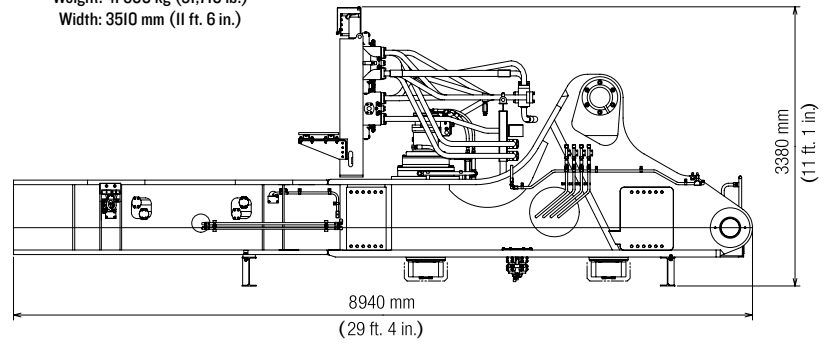
#### SWITCHBOX

Weight: 33 kg (73 lb.)  
Width: 250 mm (10 in.)



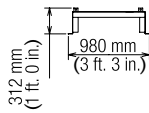
#### MAIN FRAME ASSEMBLY

Weight: 41 600 kg (91,710 lb.)  
Width: 3510 mm (11 ft. 6 in.)



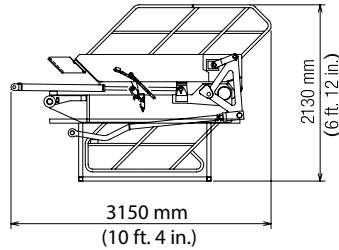
#### STEP

Weight: 37 kg (82 lb.)  
Width: 560 mm (1 ft. 10 in.)



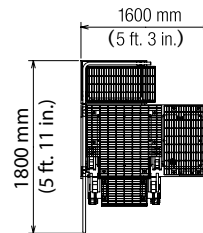
#### FOLDING STAIRS

Weight: 773 kg (1,704 lb.)  
Width: 1100 mm (3 ft. 7 in.)



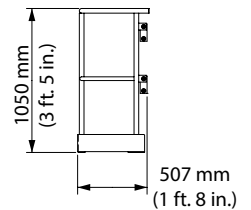
#### BOX ASSEMBLY

Weight: 869 kg (1,916 lb.)  
Width: 1242 mm (4 ft. 1 in.)



#### HANDRAIL

Weight: 17.5 kg (39 lb.)  
Width: 853 mm (2 ft. 10 in.)



# EX3600-6

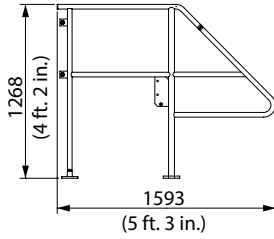
## TRANSPORTATION

Upperstructure (continued)

EX3600-6

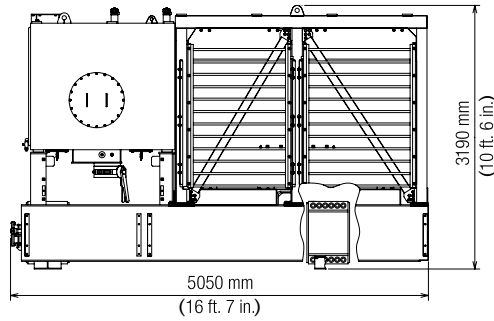
**HANDRAIL**

Weight: 22.5 kg (50 lb.)  
Width: 90 mm (0 ft. 4 in.)



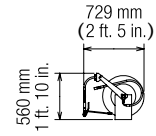
**BED ASSEMBLY (RIGHT)**

Weight: 11 700 kg (25,190 lb.)  
Width: 2420 mm (7 ft. 11 in.)



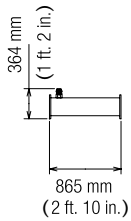
**HOSE REEL**

Weight: 50 kg (110 lb.)  
Width: 204 mm (8 in.)



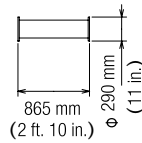
**SUCTION PIPE**

Weight: 34 kg (75 lb.)  
Width: 290 mm (11 in.)



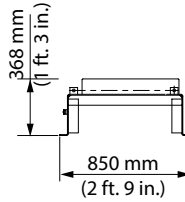
**SUCTION PIPE**

Weight: 33 kg (73 lb.)  
Width: 290 mm (11 in.)



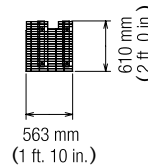
**STEP**

Weight: 39 kg (86 lb.)  
Width: 400 mm (1 ft. 4 in.)



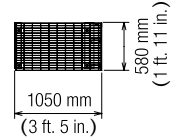
**STEP**

Weight: 37 kg (82 lb.)  
Width: 422 mm (1 ft. 5 in.)



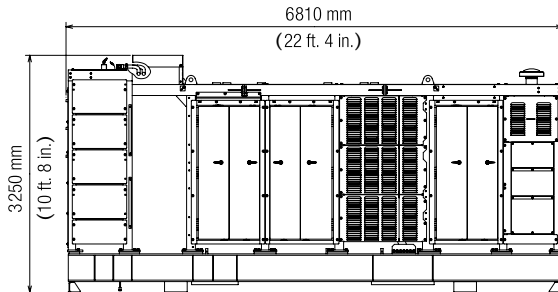
**STEP**

Weight: 48 kg (106 lb.)  
Width: 342 mm (1 ft. 1 in.)



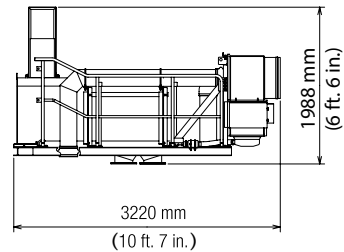
**ENGINE UNIT**

Weight: 26 500 kg (58,420 lb.)  
Width: 2670 mm (8 ft. 9 in.)



**AIR CLEANERS AND MUFFLER ASSEMBLY**

Weight: 1490 kg (3,285 lb.)  
Width: 2520 mm (8 ft. 3 in.)



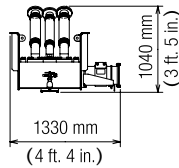
# TRANSPORTATION

Upperstructure (continued)

EX3600-6

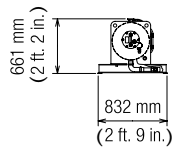
**SUCTION MANIFOLD**

Weight: 422 kg (930 lb.)  
Width: 1380 mm (4 ft. 6 in.)



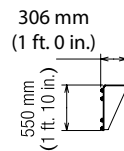
**RESERVE TANK (COOLANT)**

Weight: 118 kg (260 lb.)  
Width: 913 mm (3 ft. 0 in.)



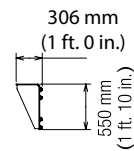
**BRACKET**

Weight: 13 kg (29 lb.)  
Width: 125 mm (5 in.)



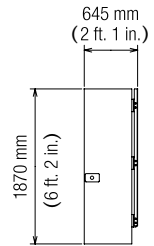
**BRACKET**

Weight: 13 kg (29 lb.)  
Width: 125 mm (5 in.)



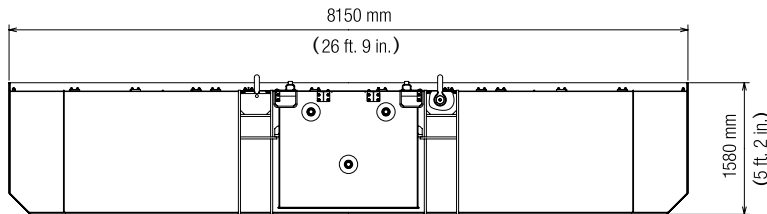
**DOOR**

Weight: 29 kg (64 lb.)  
Width: 74 mm (3 in.)



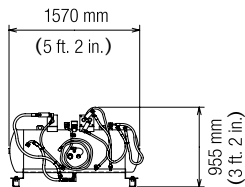
**COUNTERWEIGHT**

Weight: 39 900 kg (87,964 lb.)  
Width: 1450 mm (4 ft. 9 in.)



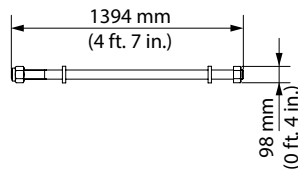
**RESERVE TANK (ENGINE OIL)**

Weight: 155 kg (342 lb.)  
Width: 543 mm (1 ft. 9 in.)



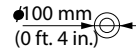
**BOLTS**

Weight: 30 kg x 8 (66 lb. x 8)  
Width: 100 mm (0 ft. 4 in.)



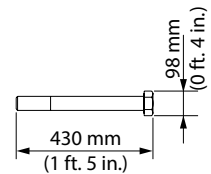
**WASHERS**

Weight: 0.8 kg x 60 (2 lb. x 60)  
Width: 20 mm (0 ft. 1 in.)



**BOLTS**

Weight: 9.3 kg x 60 (21 lb. x 60)  
Width: 85 mm (0 ft. 4 in.)



# EX3600-6

## TRANSPORTATION

Upperstructure (continued)		EX3600-6			
Other parts		Dimensions			
Content	Quantity	Length	Width	Height	Weight
Cover 1	1	1800 mm (5 ft. 11 in.)	275 mm (11 in.)	780 mm (31 in.)	34 kg (75 lb.)
Cover 2	1	620 mm (24 in.)	80 mm (3 in.)	529 mm (21 in.)	10 kg (22 lb.)
Cover 3	1	720 mm (28 in.)	20 mm (1 in.)	262 mm (10 in.)	5 kg (11 lb.)
Cover 4	2	985 mm (3 ft. 3 in.)	30 mm (1 in.)	355 mm (14 in.)	10 kg (22 lb.)
Sidewalk 1	1	1530 mm (5 ft.)	415 mm (16 in.)	1290 mm (4 ft. 3 in.)	59 kg (130 lb.)
Sidewalk 2	1	1360 mm (4 ft. 6 in.)	407 mm (16 in.)	1290 mm (4 ft. 3 in.)	49 kg (108 lb.)
Sidewalk 3	1	1720 mm (5 ft. 8 in.)	690 mm (27 in.)	1290 mm (4 ft. 3 in.)	95 kg (209 lb.)
Sidewalk 4	1	2000 mm (6 ft. 7 in.)	682 mm (27 in.)	1290 mm (4 ft. 3 in.)	123 kg (271 lb.)
Sidewalk 5	1	1820 mm (6 ft.)	620 mm (24 in.)	1220 mm (4 ft.)	65 kg (143 lb.)
Sidewalk 6	1	2360 mm (7 ft. 9 in.)	682 mm (27 in.)	1810 mm (5 ft. 11 in.)	226 kg (498 lb.)
Sidewalk 7	1	2220 mm (7 ft. 3 in.)	683 mm (27 in.)	2170 mm (7 ft. 1 in.)	218 kg (481 lb.)
Sidewalk 8	1	2560 mm (8 ft. 5 in.)	820 mm (32 in.)	2510 mm (8 ft. 3 in.)	329 kg (725 lb.)
Sidewalk 9	1	2590 mm (8 ft. 6 in.)	681 mm (27 in.)	2510 mm (8 ft. 3 in.)	329 kg (725 lb.)
Sidewalk 10	1	2010 mm (6 ft. 7 in.)	677 mm (27 in.)	2150 mm (7 ft. 1 in.)	250 kg (551 lb.)
Sidewalk 11	1	2430 mm (8 ft.)	677 mm (27 in.)	1810 mm (5 ft. 11 in.)	223 kg (492 lb.)
Sidewalk 12	1	2040 mm (6 ft. 8 in.)	869 mm (32 in.)	1810 mm (5 ft. 11 in.)	254 kg (560 lb.)
Sidewalk 13	1	1700 mm (5 ft. 7 in.)	680 mm (27 in.)	1810 mm (5 ft. 11 in.)	184 kg (406 lb.)
Sidewalk 14	1	3190 mm (10 ft. 6 in.)	866 mm (32 in.)	1230 mm (4 ft.)	176 kg (388 lb.)
Sidewalk 15	1	997 mm (3 ft. 3 in.)	630 mm (25 in.)	1210 mm (4 ft.)	71 kg (157 lb.)
Sidewalk 16	1	804 mm (32 in.)	997 mm (3 ft. 3 in.)	1410 mm (4 ft. 8 in.)	54 kg (119 lb.)
Sidewalk 17	1	1940 mm (6 ft. 4 in.)	646 mm (25 in.)	1230 mm (4 ft.)	107 kg (236 lb.)
Handrail 1	1	710 mm (28 in.)	50 mm (2 in.)	409 mm (16 in.)	6 kg (13 lb.)
Handrail 2	1	2460 mm (8 ft. 1 in.)	50 mm (2 in.)	1460 mm (4 ft. 9 in.)	22 kg (49 lb.)
Handrail 3	1	1960 mm (6 ft. 5 in.)	419 mm (17 in.)	1280 mm (4 ft. 2 in.)	36 kg (79 lb.)
Handrail 4	1	2600 mm (8 ft. 6 in.)	364 mm (14 in.)	1280 mm (4 ft. 2 in.)	38 kg (84 lb.)
Handrail 5	1	1720 mm (5 ft. 8 in.)	261 mm (10 in.)	1090 mm (3 ft. 7 in.)	17 kg (38 lb.)
Handrail 6	1	1720 mm (5 ft. 8 in.)	261 mm (10 in.)	1670 mm (5 ft. 6 in.)	19 kg (42 lb.)
Handrail 7	1	2920 mm (9 ft. 7 in.)	285 mm (11 in.)	1020 mm (3 ft. 4 in.)	32 kg (71 lb.)
Handrail 8	1	1480 mm (4 ft. 10 in.)	223 mm (9 in.)	1020 mm (3 ft. 4 in.)	17 kg (38 lb.)
Handrail 9	1	3080 mm (10 ft. 1 in.)	285 mm (11 in.)	1020 mm (3 ft. 4 in.)	33 kg (73 lb.)
Handrail 10	1	780 mm (31 in.)	280 mm (11 in.)	1010 mm (3 ft. 4 in.)	16 kg (35 lb.)
Handrail 11	1	2360 mm (7 ft. 9 in.)	97 mm (4 in.)	1010 mm (3 ft. 4 in.)	60 kg (132 lb.)
Handrail 12	1	496 mm (20 in.)	173 mm (7 in.)	1020 mm (3 ft. 4 in.)	16 kg (35 lb.)
Handrail 13	1	625 mm (25 in.)	217 mm (9 in.)	1850 mm (6 ft. 1 in.)	20 kg (44 lb.)
Handrail 14	1	611 mm (24 in.)	386 mm (15 in.)	1010 mm (3 ft. 4 in.)	16 kg (35 lb.)
Handrail 15	1	937 mm (3 ft. 1 in.)	50 mm (2 in.)	1310 mm (4 ft. 4 in.)	16 kg (35 lb.)
Handrail 16	1	663 mm (26 in.)	386 mm (15 in.)	1010 mm (3 ft. 4 in.)	16 kg (35 lb.)
Handrail 17	1	2360 mm (7 ft. 9 in.)	55 mm (2 in.)	1010 mm (3 ft. 4 in.)	30 kg (66 lb.)
Handrail 18	2	2610 mm (8 ft. 7 in.)	199 mm (8 in.)	1010 mm (3 ft. 4 in.)	23 kg (51 lb.)
Handrail 19	1	3430 mm (11 ft. 3 in.)	261 mm (10 in.)	1010 mm (3 ft. 4 in.)	39 kg (86 lb.)
Handrail 20	1	1690 mm (5 ft. 7 in.)	316 mm (12 in.)	697 mm (27 in.)	16 kg (35 lb.)

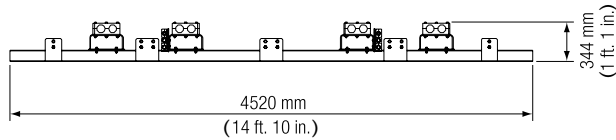
# TRANSPORTATION

### Undercarriage

### EX3600-6

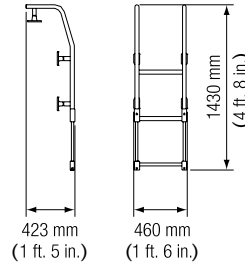
#### SUPPORT

Weight: 87 kg (192 lb.)  
Width: 108 mm (4 in.)



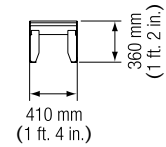
#### LADDER

Weight: 18 kg (40 lb.)



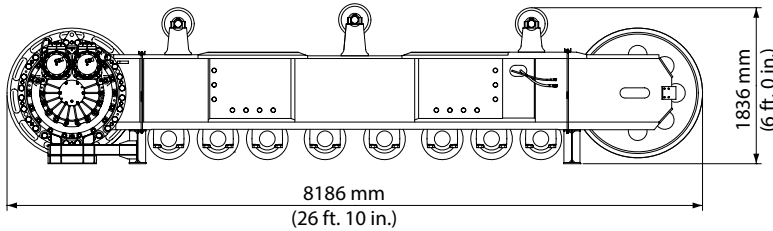
#### STEP

Weight: 11 kg (24 lb.)  
Width: 200 mm (8 in.)



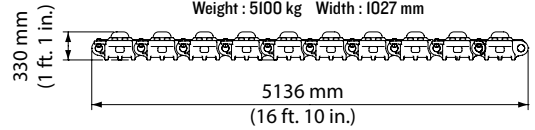
#### TRACK SIDE FRAME ASSEMBLY

Weight: 37 600 kg (82,893 lb.)  
Width: 2315 mm (7 ft. 7 in.)

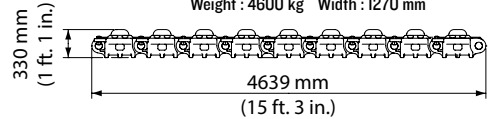


#### TRACK LINKS

Weight: 5100 kg Width: 1027 mm

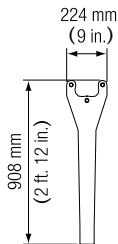


Weight: 4600 kg Width: 1270 mm



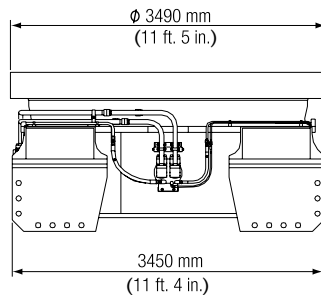
#### STOPPER

Weight: 14 kg (31 lb.)  
Width: 25 mm (1 in.)



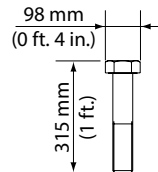
#### TRACK CENTER FRAME ASSEMBLY

Weight: 31 500 kg (69,450 lb.)  
Width: 5530 mm (18 ft. 2 in.)



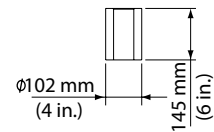
#### BOLTS

Weight: 6.9 kg x 68 (15 lb. x 68)  
Width: 85 mm (3 in.)



#### WASHERS

Weight: 6.3 kg x 68 (14 lb. x 68)  
Width: 102 mm (4 in.)



Other Parts		Dimensions			
Content	Quantity	Length	Width	Height	Weight
Cover 1	1	2370 mm (7 ft. 9 in.)	799 mm (31 in.)	831 mm (33 in.)	115 kg (254 lb.)
Cover 2	2	2180 mm (7 ft. 2 in.)	493 mm (19 in.)	1070 mm (3 ft. 6 in.)	101 kg (223 lb.)
Cover 3	1	2180 mm (7 ft. 2 in.)	547 mm (22 in.)	852 mm (34 in.)	80 kg (176 lb.)



# EX3600-6

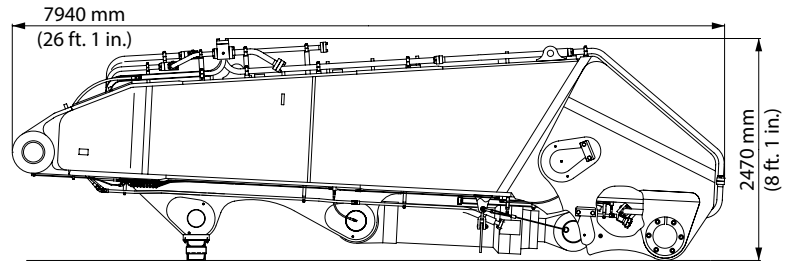
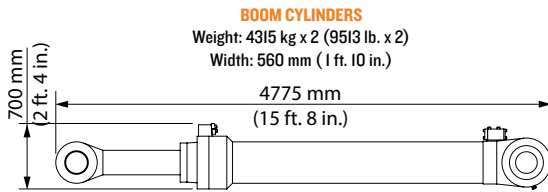
## TRANSPORTATION

### Loader Attachments

### EX3600-6

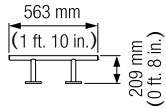
#### BOOM ASSEMBLY

Weight: 27 000 kg (59,525 lb.)  
Width: 2570 mm (8 ft. 5 in.)



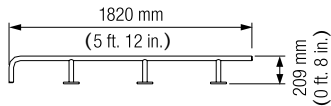
#### LADDER

Weight: 9 kg (20 lb.)  
Width: 470 mm (1 ft. 7 in.)



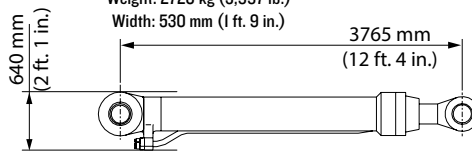
#### LADDER

Weight: 19 kg (42 lb.)  
Width: 470 mm (1 ft. 7 in.)



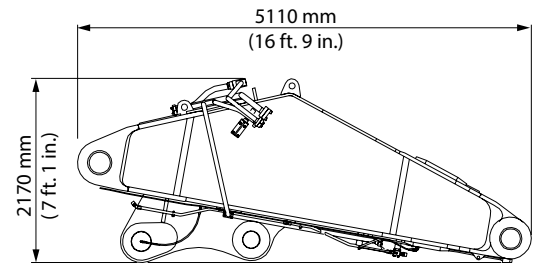
#### ARM CYLINDER

Weight: 2720 kg (5,997 lb.)  
Width: 530 mm (1 ft. 9 in.)



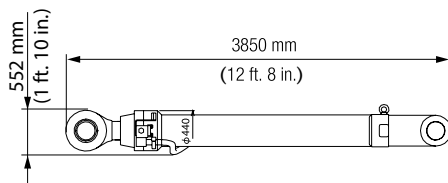
#### ARM ASSEMBLY

Weight: 13 300 kg (29,322 lb.)  
Width: 2900 mm (9 ft. 6 in.)



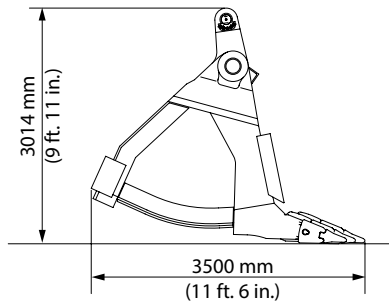
#### BUCKET CYLINDERS

Weight: 2420 kg (5,335 lb.) x 2  
Width: 885 mm (2 ft. 11 in.)



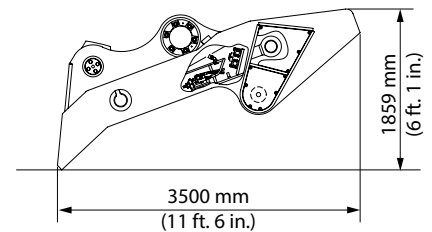
#### FRONT BUCKET ASSEMBLY

Capacity: 21.0 m<sup>3</sup> (heaped) (27.5 cu. yd.)  
Weight: 13 760 kg (30,336 lb.)  
Width: 3995 mm (13 ft. 1 in.)



#### REAR BUCKET ASSEMBLY

Weight: 14 740 kg (32,496 lb.) x 2  
Width: 4162 mm (13 ft. 8 in.)



#### Other Parts

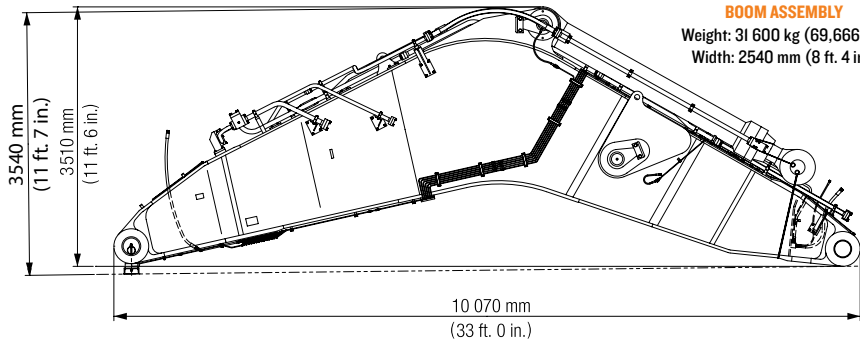
Content	Quantity	Dimensions				Weight
		Length	Width	Height	Weight	
Handrail I	2	3540 mm (11 ft. 7 in.)	50 mm (2 in.)	867 mm (34 in.)	28 kg (62 lb.)	

# EX3600-6 SPECS

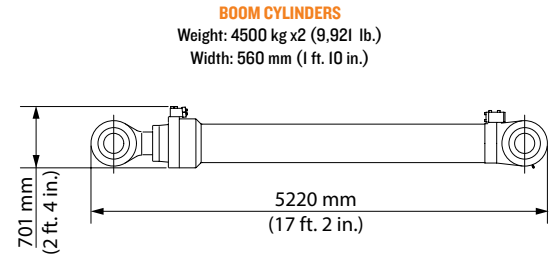
## MINING EXCAVATOR

### Backhoe Attachments

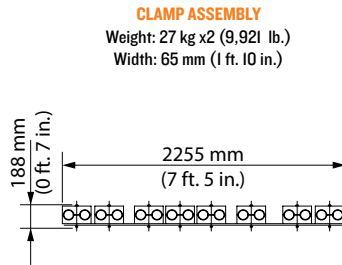
### EX3600-6



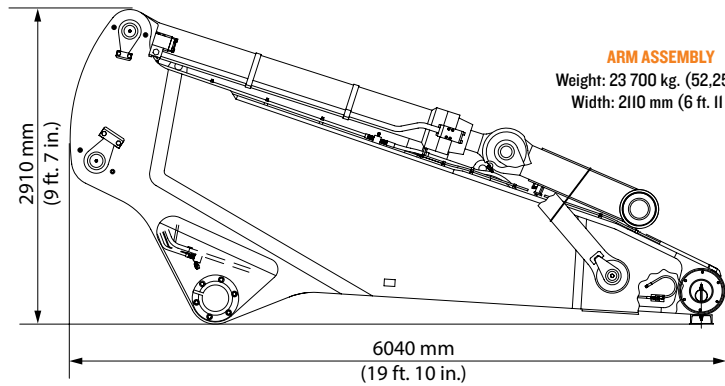
**BOOM ASSEMBLY**  
Weight: 31 600 kg (69,666 lb.)  
Width: 2540 mm (8 ft. 4 in.)



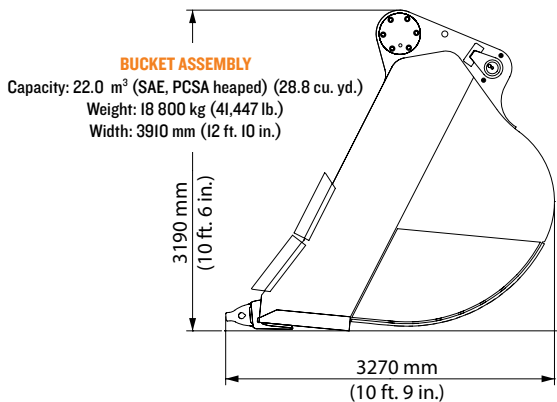
**BOOM CYLINDERS**  
Weight: 4500 kg x2 (9,921 lb.)  
Width: 560 mm (1 ft. 10 in.)



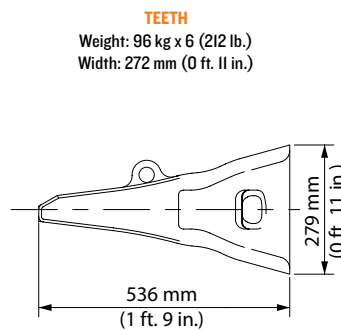
**CLAMP ASSEMBLY**  
Weight: 27 kg x2 (9,921 lb.)  
Width: 65 mm (1 ft. 10 in.)



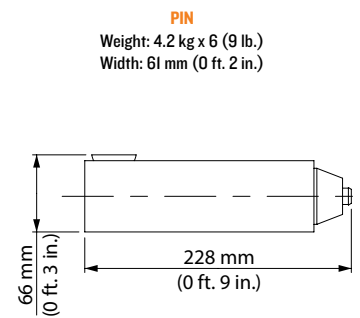
**ARM ASSEMBLY**  
Weight: 23 700 kg (52,250 lb.)  
Width: 2110 mm (6 ft. 11 in.)



**BUCKET ASSEMBLY**  
Capacity: 22.0 m<sup>3</sup> (SAE, PCSA heaped) (28.8 cu. yd.)  
Weight: 18 800 kg (41,447 lb.)  
Width: 3910 mm (12 ft. 10 in.)



**TEETH**  
Weight: 96 kg x 6 (212 lb.)  
Width: 272 mm (0 ft. 11 in.)



**PIN**  
Weight: 4.2 kg x 6 (9 lb.)  
Width: 61 mm (0 ft. 2 in.)

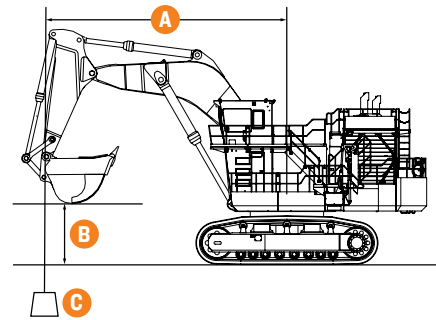
Other Parts		Dimensions			
Content	Quantity	Length	Width	Height	Weight
Handrail I	2	1900 mm (6 ft. 3 in.)	50 mm (2 in.)	917 mm (3 ft.)	16 kg (35 lb.)

# EX3600-6

## LIFTING CAPACITIES

EX3600-6 BE													Unit: 1000 kg (1,000 lb.)		
Load Point Height	8.0 m (26 ft. 3 in.)		10.0 m (32 ft. 10 in.)		12.0 m (39 ft. 4 in.)		14.0 m (45 ft. 11 in.)		15.0 m (49 ft. 3 in.)		16.0 m (52 ft. 6 in.)		At Maximum Reach		
Horizontal Distance from Centerline of Rotation	Over Front	Over Side	Over Front	Over Side	Over Front	Over Side	Over Front	Over Side	Over Front	Over Side	Over Front	Over Side	Over Front	Over Side	meters
															(feet)
EX3600-6 BE with 9.6-m (31 ft. 6 in.) boom, 4.5-m (14 ft. 9 in.) arm, 22.0-m <sup>3</sup> (28.8 cu. yd.) bucket (SAE) and 1270-mm (50 in.) shoes															
13 m (42 ft. 8 in.)					*29.5	*29.5							*15.4	*15.4	15.8 m
					(*65.0)	(*65.0)							(*44.0)	(*44.0)	(34 ft. 10 in.)
12 m (39 ft. 4 in.)					*31.0	*31.0							*14.9	*14.9	16.3 m
					(*68.3)	(*68.3)							(*32.9)	(*32.9)	(35 ft. 11 in.)
10 m (32 ft. 10 in.)					*29.8	*29.8	*28.0	*28.0					*14.4	*14.4	17.1 m
					(*65.7)	(*65.7)	(*61.7)	(*61.7)					(*31.8)	(*31.8)	(37 ft. 8 in.)
8 m (26 ft. 3 in.)					*31.4	*31.4	*31.9	*31.9	*27.2	*27.2			*14.5	*14.5	17.6 m
					(*69.2)	(*69.2)	(*70.3)	(*70.3)	(*60.0)	(*60.0)			(*32.0)	(*32.0)	(38 ft. 10 in.)
6 m (19 ft. 8 in.)			*44.4	*44.4	*39.5	*39.5	*36.5	*36.5	*32.8	*32.8			*15.0	*15.0	17.7 m
			(*97.9)	(*97.9)	(*87.1)	(*87.1)	(*80.5)	(*80.5)	(*72.3)	(*72.3)			(*33.1)	(*33.1)	(39 ft. 0 in.)
4 m (13 ft. 1 in.)			*79.6	*79.6	*59.0	*59.0	*43.7	*44.3	37.7	*38.1	*26.5	*26.5	*16.1	*16.1	17.5 m
			(*175.5)	(*175.5)	(*130.1)	(*130.1)	(*96.3)	(*97.7)	(83.1)	(*84.0)	(*58.4)	(*58.4)	(*35.5)	(*35.5)	(38 ft. 7 in.)
2 m (6 ft. 7 in.)			76.6	80.8	55.6	*62.1	41.6	*48.9	36.1	*43.3	*27.6	*27.6	*17.8	*17.8	17.1 m
			(168.9)	(178.1)	(122.6)	(*136.9)	(91.7)	(*107.8)	(79.6)	(*95.5)	(*60.9)	(*60.9)	(*39.2)	(*39.2)	(37 ft. 8 in.)
0 (Ground)			73.9	76.5	53.4	*59.5	40.1	*46.0	35.1	*39.6			*18.5	*18.5	16.3 m
			(162.9)	(168.7)	(117.7)	(*131.2)	(88.4)	(*105.8)	(77.4)	(*87.3)			(*40.8)	(*40.8)	(35 ft. 11 in.)
-2 m (-6 ft. 7 in.)	*62.8	*62.8	*66.9	*66.9	52.5	52.6	*39.0	*39.0	*30.8	*30.8					
	(*138.5)	(*138.5)	(*147.5)	(*147.5)	(115.7)	(*116.0)	(*86.0)	(*86.0)	(*67.9)	(*67.9)					
-4 m (-13 ft. 1 in.)	*58.1	*58.1	*51.5	*51.5	*40.0	*40.0	*23.8	*23.8							
	(*128.1)	(*128.1)	(*113.5)	(*113.5)	(*88.2)	(*88.2)	(*52.5)	(*52.5)							
-5 m (-16 ft. 5 in.)	*45.1	*45.1	*41.0	*41.0	*30.3	*30.3									
	(*99.4)	(*99.4)	(*90.4)	(*90.4)	(*66.8)	(*66.8)									

\*Indicates hydraulically limited capacity; numbers without \* indicate stability-limited capacities, in kg. The load point is a hook (not standard equipment) loaded on the back of the bucket. Lifting capacity of the EX Series does not exceed 75% of tipping load with the machine on firm, level ground or 87% full hydraulic capacity. Ratings are based on SAE J1097.



- A** LOAD RADIUS
- B** LOAD POINT HEIGHT
- C** LIFTING CAPACITY

# EX3600-6

## STANDARD / OPTIONAL EQUIPMENT

For the EX3600-6 equipped with a diesel engine.

Key: ● Standard ▲ Optional or special kit

### 3600 Engine

- 140 A alternator
- Heavy-duty type air cleaner with dust ejector
- Cartridge-type engine oil filter
- Cartridge-type engine oil bypass filter
- Cartridge-type fuel filter
- Water filter
- Radiator reserve tank
- Fan guard
- Isolation-mounted engine
- Pre-lubrication system
- Auto-idle engine
- Emergency engine stop system
- Engine oil reserve system

### Hydraulic System

- Engine Pump control system (EP)
- Optimum Hydraulic System (OHS)
- Fuel-saving Pump System (FPS)
- Hydraulic drive cooling-fan system
- Forced-lubrication and forced cooling pump drive system
- Control valve with main relief valve
- Suction filter
- Full-flow filter
- Bypass filter
- Pilot filter
- Drain filter
- High-pressure strainer

### Undercarriage

- Travel parking brake
- Travel motion alarm device
- Hydraulic track adjuster with N<sub>2</sub> gas accumulator and relief valve
- 1270-mm (50 in.) triple grouser shoes

### Upperstructure

- Lockable machine covers
- 39 900 kg (87,964 lb.) counterweight
- Hydraulic drive grease gun with hose reel
- Folding stairs with wide steps
- Swing parking brake

### Cab

- OPG top guard level II (ISO) helps protect the operator from falling objects
- All-weather sound-suppressed steel integrated cab
- Fluid-filled elastic mounts
- Laminated glass windshield
- Reinforced/tinted (bronze color) side and rear windows
- Parallel-link-type intermittent windshield wiper
- Front windshield washer
- LCD monitor display with various meters, pilot indicators, and warning indicators
- Air-suspension seat with automatic weight-adjusting function
- Wrist-control-type electric lever with height-adjusting function

### 3600 Cab (continued)

- Electric / hydraulic operation travel pedals
- Electric / hydraulic operation bucket open/close pedals -shovel
- LED type room lamps
- Footrest
- Air horn with electric compressor
- Auto-tuning AM-FM radio with digital clock
- Seat belt
- Hot and cool box
- Storage spaces
- Floor mat
- Air conditioner with defroster
- Rearview mirror
- Evacuation hammer
- Emergency escape device
- Trainer's seat
- Pilot control shut-off lever

### Monitor Systems

#### Meters

- Hour meter
- Fuel gauge
- Hydraulic oil temperature gauge
- Engine coolant temperature gauge
- Tachometer
- Engine oil pressure gauge
- Engine oil temperature gauge
- Battery voltage gauge
- Ambient temperature

#### Pilot indicators (green)

- Pre-lubrication system
- Auto-idle
- Travel mode

#### Warning indicators (red)

- Alternator
- Engine stop
- Coolant overheat
- Hydraulic oil level
- Auto lubrication
- Tension (Track Adjuster)
- Electric lever
- Emergency engine stop
- Stop valve
- Engine over run
- Coolant level
- Engine oil pressure
- Pump transmission oil level indicator

#### Warning indicators (yellow)

- Exhaust temperature
- Fast-filling
- Fuel temperature
- Engine warning
- Hydraulic oil overheat
- Stairway position
- Electrical equipment box

### 3600 Monitor Systems (continued)

- Pump contamination
- Air cleaner restriction

#### Alarm buzzers

- Overheat
- Engine coolant pressure
- Engine coolant level
- Fuel temperature
- Engine oil pressure
- Engine oil temperature
- Air intake manifold temperature
- Crankcase pressure
- Pump transmission oil level
- Hydraulic oil level
- Stop valve close
- Fast-filling system panel position
- Stairway position
- Electric lever fault

#### Data Logging System

- Data-Logging Unit (DLU) continuously records the performance of the engine and the hydraulic system; data can be downloaded by PC

#### Communication system\*\*

- Satellite data-transmitting system
- WIU (Wireless Interface Unit)

#### Lights

- 9 high-brightness (HID) working lights
- 7 entrance lights
- 3 maintenance lights
- 2 cab lights

#### Miscellaneous

- ISO conforming stairs and handrails
- Recirculation air filter for air conditioner
- Ventilation air filter for air conditioner
- I2-V power terminal board
- Stop valve for transport and reassembly
- Lincoln auto-lubrication system for front-attachment pins, swing bearing, and center joint
- Fast-fill fixed panel with Wiggins coupler for fuel, engine oil, engine coolant, grease, pump transmission oil, and swing device oil
- Camera monitor system
- 4 cameras and 2 color monitors

#### Optional Equipment

- ▲ Cold-weather package\*
- ▲ Travel motor guard
- ▲ Travel device guard
- ▲ 3rd Party Fleet Management Interface Connection Kit
- ▲ High elevation application\*

\*Engineered on request.

\*\*The availability of the system depends on licensing regulations in each country.

See your Hitachi dealer for further information.

# HITACHI

hitachiconstruction.com