

Specifications	Admiral 28 Cylindrical		Admiral 30 Disc	
Working width	28"	(71cm)	30"	(76cm)
Effective suction width	38"	(96cm)	38"	(96cm)
Area performance up to	51, 666 sq ft/h (4.800m ² /h)		51, 666 sq ft/h (4.800m ² /h)	
Working speed, up to	4mph (6.5km/h)		4mph (6.5km/h)	
Air volume, vacuum	69.5 Cfm (118m ³ /h)		69.5 Cfm (118m ³ /h)	
Waterlift	69" (170mbar)		69" (170mbar)	
Capacity drive motor	1hp	(800W)	1hp	(800W)
Capacity plate brush motor	1hp	(820W)	1hp	(820W)
Capacity brush motor	2(1hp) (2x820W)		2(1hp) (2x820W)	
Capacity suction motor	3/4hp (550W)		3/4hp (550W)	
Tank clean/dirty water	30. G (116/116 L)		30. G (116/116 L)	
Dirt hopper sweeping	1.3 G (5 L)		1.3 G (5 L)	
Brush Versions:	Cylindrical		Disc	
Number of brushes	2		2	
Brush diameter	6"	(15cm)	15"	(38cm)
Brush revolutions rpm	850		195	
Brush pressure	110 lbs	(50kg)	110 lbs	(50kg)
Dimensions and Weights:				
Length with squeegee	65"	(166cm)	65"	(166cm)
Height	57"	(144cm)	57"	(144cm)
Width with squeegee	38"	(96cm)	38"	(96cm)
Width without squeegee	31.5"	(80cm)	31.5"	(80cm)
Turning circle in aisles	66.5"	(169cm)	66.5"	(169cm)
Weight without batteries	750 lbs	(340kg)	750 lbs	(340kg)
Total weight, ready for operation	1,578 lbs	(716kg)	1,578 lbs	(716kg)

PowerBoss is proud to be BLUE!
What does it mean to be BLUE?

- **Water Conservation** – Aqua-Stop saves water usage by 50%, water is released through a pump system providing greater control of water usage than gravity systems
- **Clean Air** - High-performance filter system dramatically reduces the release of dust and debris back into the air, dust vacuum ensures that dust is put directly into the hopper, bristle pattern on main broom increases dust control
- **Lower Emissions** – All gas and LP engines meet Tier 2 specifications, catalyst mufflers, battery operated available, diesel operated available, bio-diesel fuel can be used in Kubota engine
- **Safer Work Environment** – Orange machines are highly visible to others in the workplace, simple controls reduce operator error, one-button scrub, horn, fire in hopper indicator, effective braking system, "belly bar" prevents operator from being pinned behind machine when in reverse, parabolic squeegee picks up all water leaving the scrub path virtually dry for traffic, seat equipped with safety shut-off switch, also available: overhead guard, back-up alarm, warning beacon
- **Clean Energy** – Battery operated available, bio-diesel fuel can be used in Kubota engines
- **Lower Chemical Reliance** – Aqua-Stop saves chemical usage by 50%, pump system for water and chemical release allows for better control of chemical usage, chemical metering system is available as an option and regulates chemical usage to the correct dose

Features listed are general for PowerBoss equipment; each machine has different features and therefore, may or may not fill all of the features listed above.

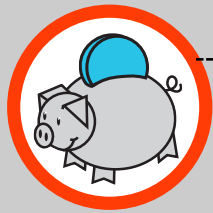


PowerBoss, Inc.
175 Anderson Street Aberdeen, NC 28315
Phone: 910-944-2105 Fax: 910-944-7409
A Member of the Hako Group

Come Visit our Website at
www.powerboss.com

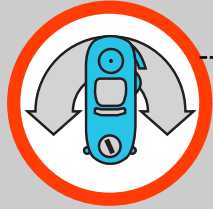
Admiral 28 & 30
Rider Scrubbers

There are Many Great Reasons to Own an Admiral 28 or 30.



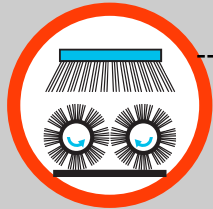
Reason 1

Excellent price/performance ratio. Increased productivity = savings.



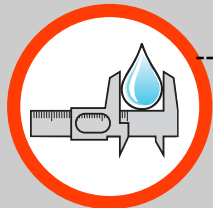
Reason 2

Even more maneuverable than walk-behind machines: turning radius of 66.5" in aisles. Intelligent construction provides "rear turning" and special squeegee kinematics.



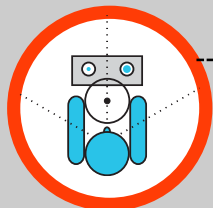
Reason 3

Cylindrical brush with integrated sweeping function saves additional work. Optimum scrubbing performance even on structured floors and tiled surfaces.



Reason 4

Covers more ground because of the economical, electronically controlled water dosage with memory function and Aqua-Control System (ACS).



Reason 5

Ergonomically designed workplace with optimum view of the working tools and the area to be cleaned.

Comfortable operators compartment

Large solution/recovery tanks

Clearly laid out control panel for ease of operation

Parabolic squeegee vacuums up all water completely

Single front wheel drive for optimum turning radius

Choice of disc (Admiral 30) or cylindrical (Admiral 28)



Equipped with disc (Admiral 30) or cylindrical (Admiral 28) brush unit these scrubbers power through industrial applications.



The Admiral 28 and 30 offer optimum operator comfort with excellent view of all operational controls.



Clearly laid out control panel

All operational controls are in direct view and reach of the operator. These controls are easy to understand and easy to use.



Handy

Mountings and storage area for any cleaning utensils to be transported and outlet valves for quick, clean tank emptying.



Strong

The large volume tank helps cut down on filling time and increases run time. Large tank opening for cleaning.



Safe

The parabolic squeegee vacuums up all the water completely. The floor is dry enough to walk on.



Highly maneuverable

Turning radius 66.5" in aisles. Rear turning, parabolic squeegee and front wheel drive with 90° steering angle in both directions.



A choice of brush systems

Disc or cylindrical brushes ensure that the machine can be adapted to suit the specific application conditions. Optimum scrubbing even on structured floors and tiled surfaces.



Aqua-Stop

Up to 50% savings of water and cleaning agents. Electronically controlled water dosage with memory function.

Purchase costs	Savings as a result of increased productivity				
	Year 1	Year 2	Year 3	Year 4	Year 5
Additional investment	High	Medium	Low	Low	Low
When compared with walk-behind machines.	High	Medium	Low	Low	Low

Admiral 28 & 30: The additional cost of purchase is compensated for within the second year!